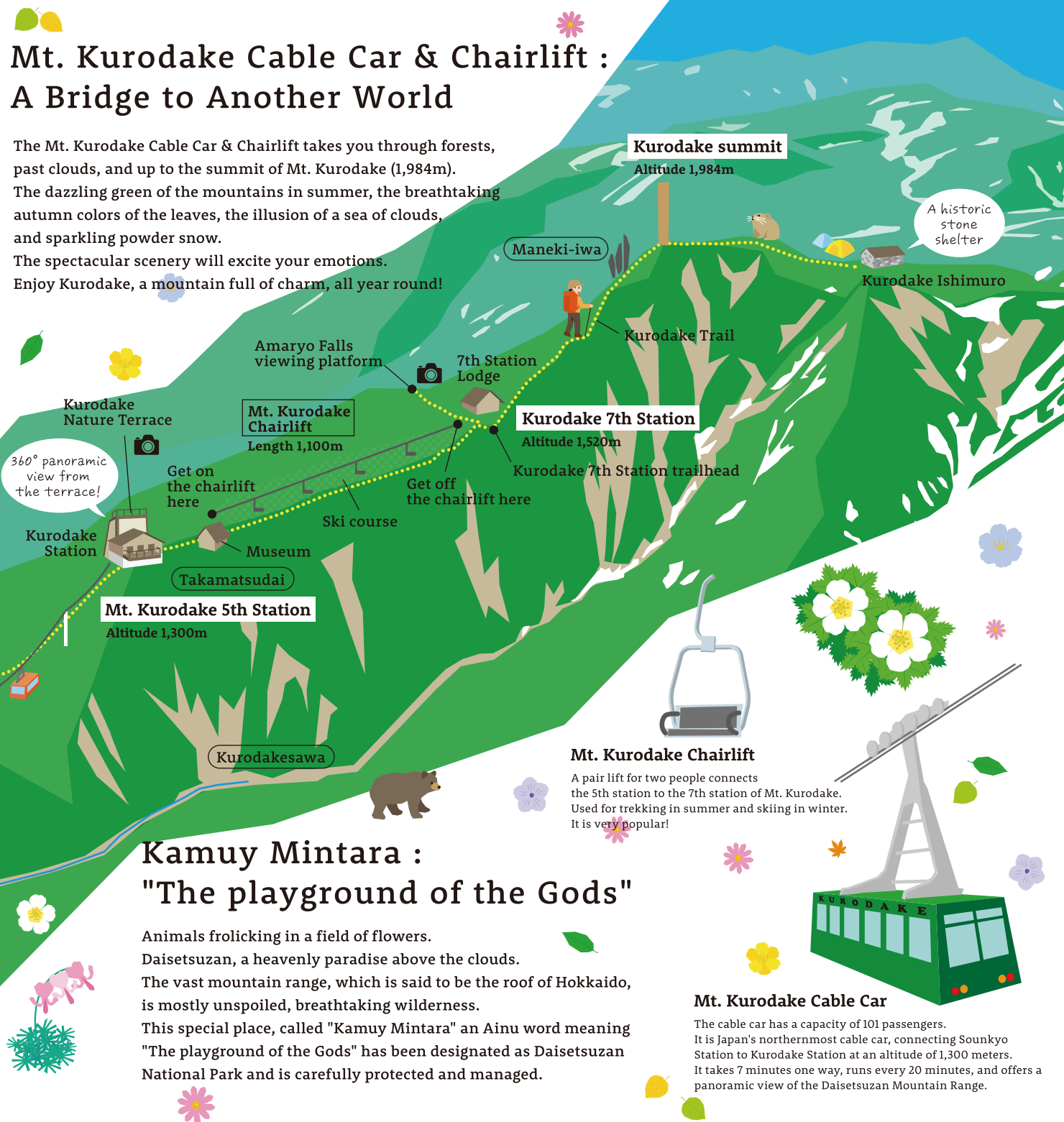


Daisetsuzan Sounkyo  
Mt. Kurodake Cable Car and Chairlift

大雪山 黒岳  
くろだけ  
ケーブル&リフト

DAISETSUZAN NATIONAL PARK

A  
Bridge  
to  
Another  
World



# Mt. Kurodake Cable Car & Chairlift : A Bridge to Another World

The Mt. Kurodake Cable Car & Chairlift takes you through forests, past clouds, and up to the summit of Mt. Kurodake (1,984m). The dazzling green of the mountains in summer, the breathtaking autumn colors of the leaves, the illusion of a sea of clouds, and sparkling powder snow. The spectacular scenery will excite your emotions. Enjoy Kurodake, a mountain full of charm, all year round!

## Kamuy Mintara : "The playground of the Gods"

Animals frolicking in a field of flowers. Daisetsuzan, a heavenly paradise above the clouds. The vast mountain range, which is said to be the roof of Hokkaido, is mostly unspoiled, breathtaking wilderness. This special place, called "Kamuy Mintara" an Ainu word meaning "The playground of the Gods" has been designated as Daisetsuzan National Park and is carefully protected and managed.

**Mt. Kurodake Chairlift**  
A pair lift for two people connects the 5th station to the 7th station of Mt. Kurodake. Used for trekking in summer and skiing in winter. It is very popular!

**Mt. Kurodake Cable Car**  
The cable car has a capacity of 101 passengers. It is Japan's northernmost cable car, connecting Sounkyo Station to Kurodake Station at an altitude of 1,300 meters. It takes 7 minutes one way, runs every 20 minutes, and offers a panoramic view of the Daisetsuzan Mountain Range.

## Mt. Kurodake Cable Car & Chairlift Fees and Hours of Operation

◆Cable Car < 7 minutes one-way, runs every 20 minutes >

Type		Adult	6 to 12 years	Hours
Individuals	Round trip	2,600 yen	1,300 yen	Jan 1 - Mar 31 8:00 - 16:00
	One way	1,500 yen	750 yen	Apr 1 - May 31 8:00 - 16:30
Group	Round trip	2,300 yen	1,150 yen	Jun 1 - Sep 30 6:00 - 18:00
	One way	1,200 yen	600 yen	Oct 1 - Oct 15 6:00 - 17:00
Disability Discount	Round trip	1,300 yen	650 yen	Oct 16 - Nov 30 8:00 - 16:30
	One way	750 yen	400 yen	Dec 1 - Dec 31 8:00 - 16:00

◆Chairlift < 15 min. one-way in summer, 9 min. one-way in winter >

Type		Adult	6 to 12 years	Hours
Individuals	Round trip	1,000 yen	500 yen	< Summer >
	One way	700 yen	350 yen	Jun 1 - Sep 30 6:30 - 17:30
Group	Round trip	900 yen	450 yen	Oct 1 - Oct 15 6:30 - 16:30
	One way	600 yen	300 yen	< Winter >
Disability Discount	Round trip	500 yen	250 yen	When ski grounds are open 9:00 - 15:20
	One way	350 yen	200 yen	

◆Cable Car & Chairlift Combo Ticket

Type		Adult	6 to 12 years
Individuals	Round trip	3,300 yen	1,650 yen
	One way	2,000 yen	1,000 yen
Group	Round trip	3,000 yen	1,500 yen
	One way	1,700 yen	850 yen
Disability Discount	Round trip	1,650 yen	850 yen
	One way	1,000 yen	500 yen

\*Group Fare: 10 or more people  
\*Adults: 13 years old and older  
\*Free for Children between the ages 0 to 5.  
\*Disability discount fares are available only for those with a disability certificate or a rehabilitation certificate issued by the local government.  
◆1st type: 1st grade Special Needs Certificate (Ryokuu techou): the person himself/herself and one caregiver  
◆Certificate other than the above: Only the certificate holder

◆Inquiries

Rinyu Corporation Sounkyo Office

Sounkyo, Kamikawa-cho, Kamikawa-gun, 078-1701  
TEL : 01658-5-3031 FAX : 01658-5-3019  
<https://www.rinyu.co.jp/kurodake/>

Scan here for the latest information on Kurodake Cable Car and Chairlift.





# Paradise Awaits Shortly

The cable car takes you to an altitude of 1,300 meters. The sea of clouds spread out below, and you can hear the birds singing in the thick greenery. You realize that the feeling of the air on your cheeks is different from the air on the ground. You are now in a sky paradise, in the heart of Daisetsuzan.

## Kurodake's four seasons

### Alpine Plants Jun - Aug

Alpine plants begin to emerge against the backdrop of Mt. Kurodake with lingering snow, marking the arrival of spring after a long winter.

### Spring



### Summer Trekking Jul - Aug

Mt. Kurodake is crowded with trekkers as the lush greenery and colorful alpine flora are at their peak of bloom.

### Summer



Mt. Kurodake

Discover the joys of the four seasons!

### Aug - Oct

#### Mt. Kurodake Autumn Foliage

The colorful expressions of the autumn leaves are breathtakingly beautiful. The leaves gradually begin to change color from the summit of the mountain in late August, and it takes about a month to reach the base of the mountain, Sounkyo.

#### Best time to see the autumn leaves

Summit	Late Aug
9th to 7th Station	1st half of Sep
5th Station / Cable Car Area	2nd half of Sep
Around hot spring town	1st half of Oct

### Autumn



### Winter



### Nov - May

#### Winters on Mt. Kurodake

The white mountains seen from the cable car are spectacular! On cold mornings, you can enjoy the mysterious frost-covered trees.

#### Kurodake Ski Resort

Kurodake Ski Resort, a long-running ski resort open from November to May, has some amazing soft powder snow.

Mt. Keigetsudake

## Enjoy the great wilderness of Daisetsuzan!

Try out activities to fully enjoy the great wilderness of Daisetsuzan!

There are a variety of tours and rental items, so please feel free to contact us.

### Rental Period Jul - Sep

#### Trekking equipment rental

●Mt. Kurodake Cable Car Kurodake Station

For those who want to try their hand at trekking but don't have the gear. We offer rental trekking shoes, poles, backpacks, rainwear, and more.



Kids' gear also available!



Black Mountain Coffee by Columbia

### Take a break at the café.

There is a café and a Columbia store on the 3rd floor of the cable car station building where you can relax in a stylish atmosphere.

#### Columbia Field Store Kurodake Cable Car Location

- Mt. Kurodake Cable Car Sounkyo Station 3F
- Hours: 9:00-15:30
- Closed on Tuesdays



<https://bmcc.official.ec/>



Mt. Ryoundake

## An amazing experience!

### Morning Cable Car Jun - Sep

Early morning stroll tour with a nature guide

The early morning is a great chance to enjoy the sea of clouds! The sunrise and fresh mountain air will wake up your body giving a great start to your day.



### Snowshoe Tours Dec - Mar

Explore the winter wonderland with a guide! The beauty of the winter mountains will make you forget the cold. All equipment can be rented.



Beginners welcome!

### Enjoy a great lunch!

Enjoy your meal on the terrace with a spectacular view! The menu includes rice bowls, combo meals, soba and udon noodles, and much more.

We recommend the kurodake kara-age Deep-fried Chicken Rice Bowl!



#### Tomochan Shokudo Kurodake

- Mt. Kurodake Cable Car Kurodake Station 2F
- Hours: 11:00 - 15:30 (Last order taken at 15:00)
- Closed irregularly
- \*Business hours may vary depending on the season.



@tomochan.kurodake